



PREMIUM RANGE

Passthrough Dishwashers

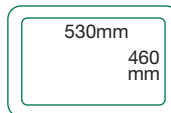
PREMIUM RANGE

Passthrough dishwashing machines specifically designed and incorporating the latest technology to meet the rigorous demands of all UK catering outlets

*Heavy duty • Reliable • Hygienic • Cost effective
Easily maintained • Economical*

Specifications	DC 1000
Height mm	1500
Height - hood raised mm	1960
Depth mm	770
Width mm	650
Baskets mm	3x500x500
Loading height (vertical) mm	385
Cycle options seconds	120-180
Wash tank capacity lts	28
Rinse tank capacity lts	9
Water consumption per cycle lts	3
Rinse tank element watts	6000
Wash tank element watts	3000
Pump motor watts	900
Total loading watts	6900
Power supply 240v	30A or 3P+N (3x13A)
Wash tank temperature °c	55
Rinse tank temperature °c	80 (or as req'd)
Waste height max mm	410
Waste pump (option)	✓
Waste outlet hose Ø	32
WRAS approved - category 4	Break tank
Rinse booster pump (integral) watts	210

DC 1000A

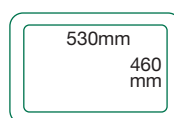
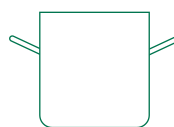


DC 1000
Passthrough
Dishwasher



PREMIUM RANGE

- 35 years experience in the design, manufacture and distribution of glass and dishwashing systems
- Constructed of catering grade 18/8 AISI stainless steel, non-corrosive materials, correctly rated components and tough electro-mechanical controls - no expensive circuit boards
- Powerful anti-clog wash arms and contra-rotating light weight rinse arms for optimum results
- Specially designed insulated low volume wash tank requires up to half as much water as conventional machines and therefore consumes less water, less power and less detergent for maximum savings
- Double filter system with deep filter dish ensures full protection and reduced maintenance time
- Spares at competitive prices reduce repair costs and prolong the viability of your machine
- Counter balanced double skinned insulated hood and outer panels for additional strength and reduced noise levels
- Integral peristaltic detergent and rinseaid pumps for precise dosing
- Moulded self-clean wash tank with easily removable basket support eliminates dirt traps and cuts maintenance time
- Self-draining wash pump for increased hygiene
- WRAS approved break tank with rinse booster pump
- Options - factory fitted waste pump - integral rinse booster pump



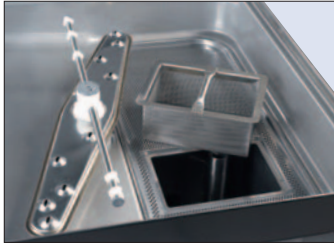
DC 1300
Passthrough
Dishwasher

Specifications	DC 1300
Height mm	1500
Height - hood raised mm	1960
Depth mm	770
Width mm	650
Baskets mm	3x500x500
Loading height (vertical) mm	385
Cycle options seconds	60-120-180
Wash tank capacity lts	28
Rinse tank capacity lts	9
Water consumption per cycle lts	3
Rinse tank element watts	6000
Wash tank element watts	3000
Pump motor watts	1135
Total loading watts	7135
Power supply 240v	30A or 3P+N (3x14A)
Wash tank temperature °c	55
Rinse tank temperature °c	80 (or as req'd)
Waste height max mm	410
Waste pump (option)	✓
Waste outlet hose Ø	32
WRAS approved - category 4	Break tank
Rinse booster pump (integral) watts	210

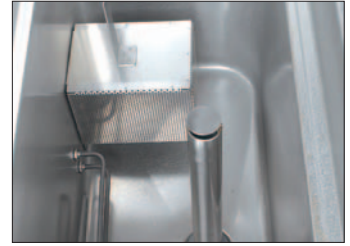
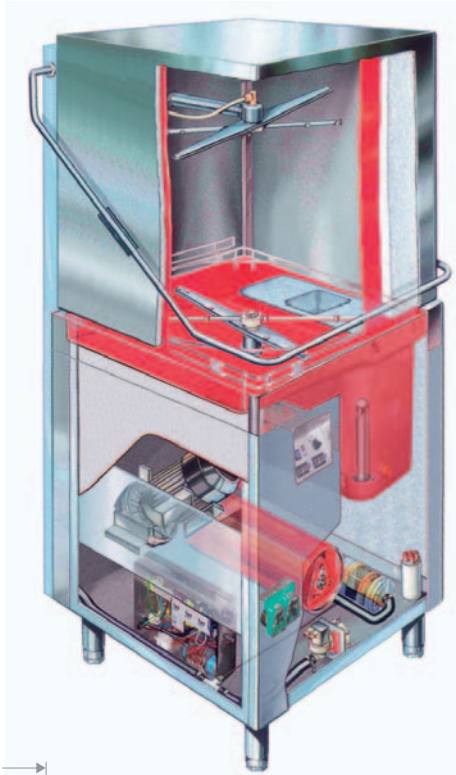
DC 1300A



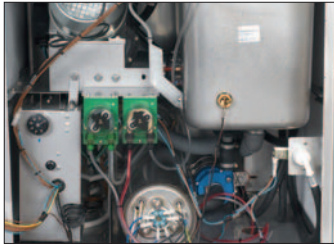
PREMIUM RANGE



Moulded self clean wash tank with surface filter and deep filter dish.



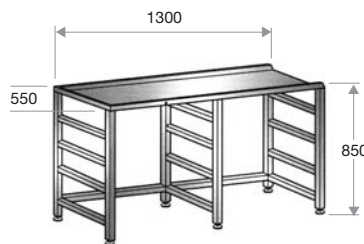
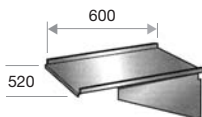
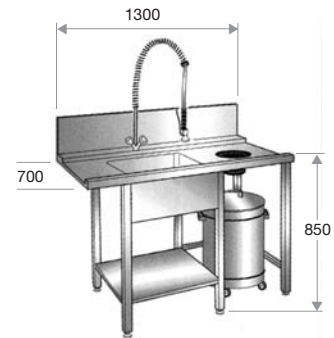
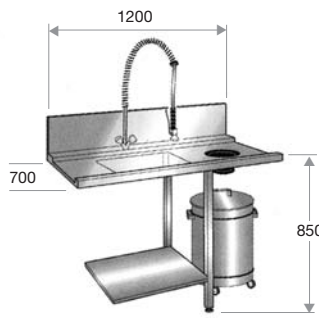
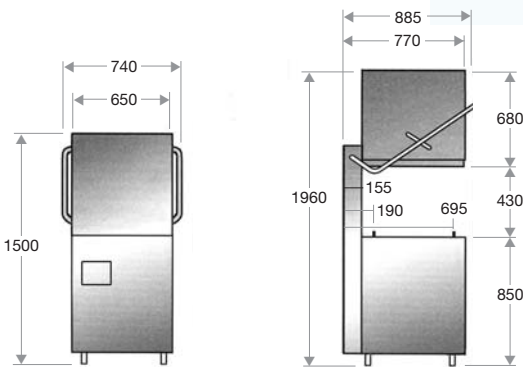
Moulded wash tank with secondary filter for full protection.



Integral detergent and rinseaid pumps - easy access to heating elements, inlet solenoid etc.



WRAS approved category 4 break tank c/w integral rinse booster pump.



Accessories

- Water softeners • Rinse booster pumps
- Racks • Inlet tabling • Outlet tabling
- Spray off units

Warranty: one year parts & labour.

We reserve the right to change specifications without notice

Technical

Water connection: $\frac{3}{4}$ BSP.

Water pressure: 2-4 bar.

Water flow rate - break tank: 4-7 lts per minute.

Water softeners required where water hardness exceeds 7° Clark (English scale) - 100PPM.



Direct Catering Products
Northload House Northload Lane
Theale Wedmore Somerset BS28 4SY
Telephone: 01934 713358
Fax: 01934 712164

www.directcateringproducts.co.uk
E-mail: sales@directcateringproducts.co.uk



Authorised Dealer