



# STANDARD RANGE

**Glass & Dishwashers**

# STANDARD RANGE

## Glass and dishwashing machines specifically designed to meet the rigorous demands of all UK catering outlets

*Robust • Reliable • Hygienic • Cost effective*



Specifications	DC 035	DC 040	DC 045
Height mm	575	640	812
Depth mm	470	515	550
Width mm	420	470	535
Baskets mm	2x350x350	2x400x 400	2x450x 450
Loading height max mm	210	248	290
Cycle minutes	2	2	2
Wash tank capacity lts	10.7	14.0	22.0
Rinse tank capacity lts	2.7	3.9	7.0
Water consumption per cycle lts	2.0	2.0	2.5
Rinse tank element watts	2600	2600	4500
Wash tank element watts	1600	1600	2500
Pump motor watts	210	210	580
Total loading watts	2810	2810	5080
Power supply 240v	13A	13A	25A or 3P+N
Wash tank temperature °c	55	55	55
Rinse tank temperature °c	80 (or as req'd)	80 (or as req'd)	80 (or as req'd)
Waste height max mm	140	160	180
Waste pump (option)	✓	✓	✓
Waste outlet hose Ø	25	25	32
WRAS approved	D.check valve	D.check valve	D.check valve
Rinse booster pump watts	-	-	-

# STANDARD RANGE

- 35 years experience in the design, manufacture and distribution of glass and dishwashing systems
- Constructed of catering grade 18/8 AISI stainless steel, non-corrosive materials, correctly rated components and tough electro-mechanical controls - no expensive circuit boards
- Double skinned door and outer panels for additional strength and reduced noise levels
- Powerful anti-clog wash arms and contra-rotating light weight rinse arms for optimum results
- Integral peristaltic detergent and rinseaid pumps for precise dosing
- Spares at competitive prices reduce repair costs and prolong the viability of your machine
- WRAS approved double check valves or break tanks with integral rinse booster pumps
- Options - factory fitted waste pump - integral rinse booster pump (DC045/DC060 and DC050/DC070)



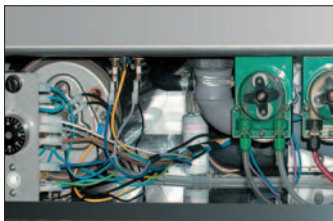
Specifications	DC 050	DC 060	DC 070
Height mm	840	812	840
Depth mm	610	550	610
Width mm	580	535	580
Baskets mm	2x500x500	3x450x450	3x500x500
Loading height max mm	315	290	315
Cycle minutes	2	3	3
Wash tank capacity lts	26.0	22.0	26.0
Rinse tank capacity lts	7.0	7.0	7.0
Water consumption per cycle lts	2.5	2.5	2.5
Rinse tank element watts	4500	4500	4500
Wash tank element watts	2500	2500	2500
Pump motor watts	580	580	580
Total loading watts	5080	5080	5080
Power supply 240v	25A or 3P+N	25A or 3P+N	25A or 3P+N
Wash tank temperature °c	55	55	55
Rinse tank temperature °c	80 (or as req'd)	80 (or as req'd)	80 (or as req'd)
Waste height max mm	200	180	200
Waste pump (option)	✓	✓	✓
Waste outlet hose Ø	32	32	32
WRAS approved	D.check valve	Break tank	Break tank
Rinse booster pump watts	-	210	210

DC 060A ————— DC 070A

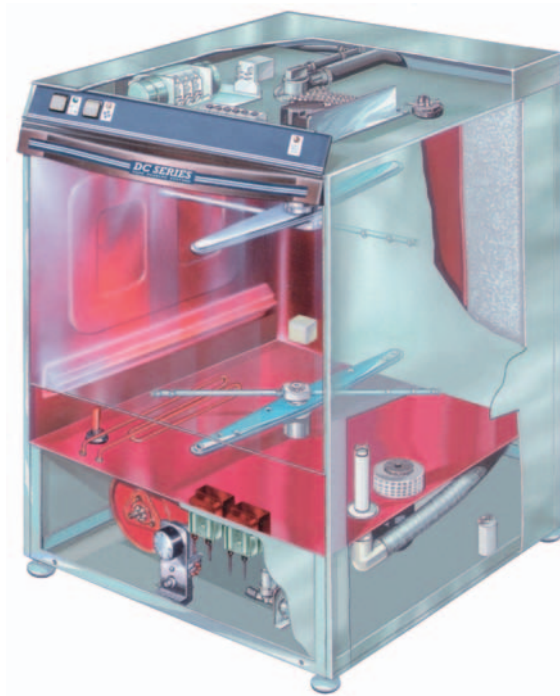
# STANDARD RANGE



Top panel slides out for easy access to electrical components.



Integral detergent and rinseaid pumps - easy access to heating elements, thermostats, etc.



Moulded wash tank with integral basket slides - wash & rinse arms.



WRAS approved category 4 integral break tank.

## Wash Station

### Accessories

- Water softeners
- Machine stands
- Rinse booster pumps
- Drip trays
- Dish baskets
- Glass baskets
- Racking bays

### Technical

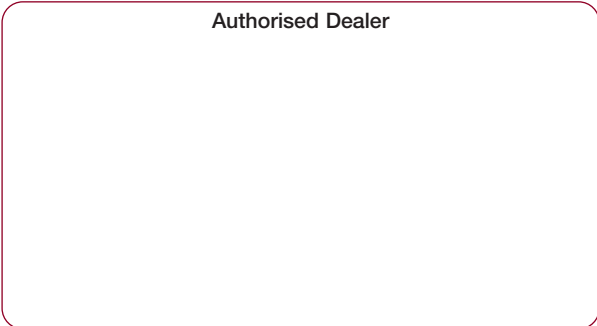
Water connection:  $\frac{3}{4}$  BSP.  
 Water pressure: 2-4 bar.  
 Water flow rate - break tank:  
 3 lts per min.  
 Water softeners required  
 where water hardness  
 exceeds 7° Clark  
 (English scale) - 100PPM.



Warranty: one year parts & labour.  
 We reserve the right to change specifications without notice



Direct Catering Products  
 Northload House Northload Lane  
 Theale Wedmore Somerset BS28 4SY  
 Telephone: 01934 713358  
 Fax: 01934 712164  
  
[www.directcateringproducts.co.uk](http://www.directcateringproducts.co.uk)  
 E-mail: [sales@directcateringproducts.co.uk](mailto:sales@directcateringproducts.co.uk)



Authorised Dealer